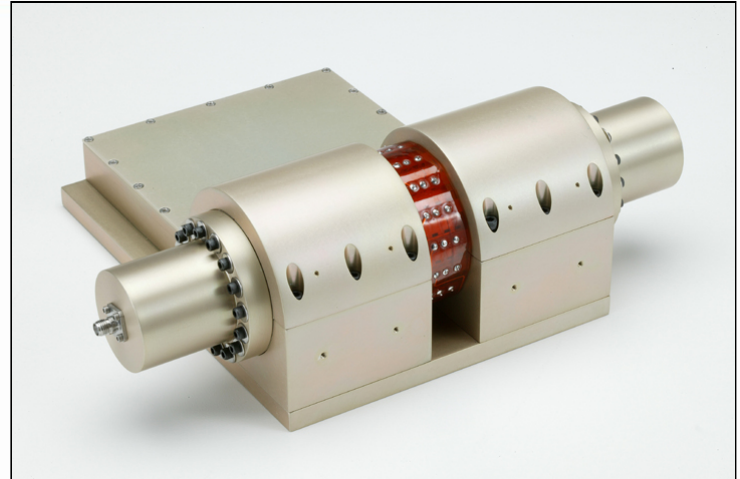


**Spatially Combined Power Amplifier**
**Key Features:**

- Patent pending Spatium™ spatial combiner technology
- Ultra-broad 6 to 18 GHz Bandwidth
- 45 Watts saturated power
- Solid state MMIC reliability
- Fast warm up



Electrical Parameters	Units	Min.	Typ.	Max.
<b>@10 V, 25°C Baseplate</b>				
Frequency	GHz	6		18
Gain	dB		21	
Gain Variation 6-18 GHz	±dB		3	
Gain Variation, Over Operating Temp.	±dB		1	
Input VSWR (50 Ohms)			2:1	
Output VSWR (50 Ohms)			2.5:1	
Output Power, Saturated	Watts		50	
Output Power, 1 dB Compressed	Watts		40	
Third Order Intercept Point	dBm		56	
Second Order Intercept Point	dBm		66	
Harmonics (Pout<P1dB)	dBc		-30	
Spurious	dBc		-70	
Current	Amps		40	
<b>Physical Parameters</b>				
Size	In.	9.96x8.50x3.72		
RF Connectors		SMA (F)		

